



# artistic endeavors

The Newsletter of the Beaufort Art Association

*Chartered in 1957 to promote  
community interest and education in the visual arts.*

JANUARY/ FEBRUARY 2012

## LOWCOUNTRY TEXTURES



Sometimes stressful moments give us a chance to do something out of the ordinary. When unforeseen circumstances almost led to an empty "featured artist" area in January, the executive board of directors came up with a novel idea. It could be filled cooperatively, like the rest of the gallery, but with one unifying theme. They chose "Lowcountry Textures." The show will run from January 8 through February 18, 2011 with an opening reception on February 13 from 5:30 p.m. to 7:30 p.m. All BAA artists are invited to bring a third piece to changeover on January 8. The piece can depict any subject matter, but must show texture two-dimensionally or three-dimensionally.

Even at this early stage in the exhibit, it looks like this will be a great chance to showcase how different artists approach a single very loose "assignment." Tom Van Steenberg's three-dimensional work in progress (below) features real shells in a hand-painted display. Pam Hagan's more two-dimensional work (below), similar to the one that will be in the exhibit, focuses on the texture of palmetto leaves lit by a sunset. Mary Jane Martin's mixed media piece (below) shows more fluid use of textures, layered on top of one another.



These are just a few ways that texture will be included in exhibition. There are great ways to include texture in every medium, and we can't wait to see what everyone brings to the show!

**MORE INFO:** Each hanging piece must be no more than 24" in each direction including the frame, and each non-hanging piece must be no larger than one pedestal. Participating artists will be asked to contribute either a bottle of wine OR an appetizer for the reception, with a sign-up sheet at check-in on January 8, 2012.

## BAA & BMH Foundation 2011 Benefit Exhibit and Sale

*BAA/ BEAUFORT MEMORIAL HOSPITAL SHOW BENEFITS COMMUNITY*

The 21st Annual Beaufort Art Association - Beaufort Memorial Hospital Foundation Benefit Sale. concluded on December 12, 2011 after a successful two-month display.

This BAA-BMH Foundation show featured 60 artists and over 100 original paintings and photographs representing the work of participating Beaufort Art Association members.

The Beaufort Art Association receives no revenue from the exhibit; the participating artists agree to donate 40 to 100 percent of the value of the works sold. The proceeds help to provide prescription medications to hospital patients who are unable to afford their medications when they are released.

The Show's 2011 sales totaled \$3,885, with 14 pieces sold. The total contribution for the Beaufort Memorial Hospital Foundation was \$1,584.

A thank-you to all participants and volunteers who made this show possible!

Congratulations to these selling artists:

**Sally Chaplin (2 pieces), Norma Deal, Sandy Dimke, Cheryl Eppolito, Ed Funk, Linda Herbert (2 pieces), Eric Horan, Claudette Humphrey, Eve Miller, Beverly Peacock, Tei Tober, Cynthia Zeiss.**

## FROM THE PRESIDENT....

HAPPY NEW YEAR to each of you and your families! 2011 has been a GREAT YEAR for the BAA. And, I have no doubt that 2012 will be a SUCCESS with your continued support!

What this New Year will bring to all of us, lies in what we contribute! Our talents, time and energy are needed. I sincerely hope that you will evaluate your talents and consider sharing your expertise in promoting and supporting our efforts to be THE BEST GALLERY on Bay Street and the most desirable art association.

2012 gives us a clean page to start anew and to strive to improve ourselves through participating in the Studio Classes that will be offered during the coming months: supporting and bringing a friend along to our Popcorn Video Series, assisting with Featured Artists receptions when called upon, and attending those receptions in support of our artists and gallery.

The BAA's 51<sup>st</sup> Spring Show will be a wonderful event in March. I look forward to seeing your entries for the show and your willingness to volunteer to make this one of the HIGHLIGHTS of the spring season for Beaufort County.

How do we do all that we do? The answer to that lies within each of us! I plan to commit myself to each of you by bringing ENERGY, SMILES and SUPPORT in this New Year, and I extend my hand to each of you in anticipation that we will do this together and reap the benefits and joys of SUCCESS!

In closing I share the following quotes that speak to me!

*"The road to success is always under construction."*

Lily Tomlin

*"Always remember that you are unique, just like everyone else."*

Author Unknown

*"It's not a faith in technology. It's faith in people."*

Steve Jobs

Appreciatively,

Jacqueline Jones

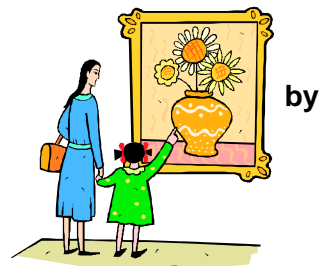
## Gallery News

**Happy New Year to all of our BAA members.**

**We have had a great exhibit for the holidays, featuring photography Sandy Dimke and Karen Peluso. Our Holiday Boutique has also been very successful. Thank you Marian Sanders for organizing this.**

**We start 2012 with a "Lowcountry Textures" show featuring additional works by our BAA Gallery Artists. Please join us for the reception, Friday, January 13, 2012**

**Audrey Montgomery**





Pat Kelly, Dorothy Fetters, and Gay Torrey

## FRIENDS OF CAROLINE HOSPICE

### Festival of Trees Report

This year is our 8<sup>th</sup> year of participating in this worthwhile program. Our first donation was in 2004.

Our members painted the "Universal Signs of Life", converting them into jewels. We, the chairs, added 600 "led" lights, a silver garland and a tree-top star. Over 60 extremely clever works of art were appreciated by the committee and the Festival viewers.

We thank each and every one of you who took your time, talent and treasure to help this wonderful cause.

We also wish to recognize our "behind-the-scenes" angel without whose dedication this worthwhile project would not have been realized. Thank You Dorothy Fetters for the sincerity and depth of your caring. Onward to the creativity of 2012!

Gay Torrey and Pat Kelly, Co-Chairs

Photo Credits: 2004 - Martin Stearns, 2011 – Larry Kay



Our first tree in 2004



This year's tree

For your information.....

*In 1977, a young local woman named Caroline Sue Quann died of cancer at the age of 31. To honor her wishes to be at home for her final days, her friends resolved to provide her with companionship and medical care she deserved in order to die with grace and dignity. This marked the founding of the Friends of Caroline Hospice, the only hospice in Beaufort County at that time. Supporters over the years have contributed thousands of dollars, benefiting terminally ill patients in the Beaufort community, at no cost to the patients and/or their families. These funds have changed the quality of life for thousands of individuals, both patients and family members, who have received services.*

*The Festival of Trees is a six-day extravaganza featuring decorated holiday trees in a family-centered Christmas fantasyland becoming the most successful of the money-raising events for the Hospice. Participants pay a \$225.00 entry fee for the privilege of exhibiting and tickets are sold for attendance at the Opening Reception Gala with a silent auction. The week of the display, visitors pay an admission of \$3.00, lunches may be purchased and there is a Gift Shop offering holiday wreaths and crafts. Many of the trees on display are sold – decorated and undecorated. The trees donated by the Beaufort Art Association and Deanna Bowdish, owner of The Gallery, are offered for bidding throughout the entire display.*

In response to some requests, Joan Templer will be available to 'critique' paintings in our gallery when she is sitting there on the third and fourth Monday mornings of the month. Joan taught art at universities for many years and will be glad to help you if you wish. If you are interested, you should just make sure that she will be working that day.

**Popcorn and Video** will resume Jan. 25th. The topic will be announced later.  
Wishing all a Very Merry Christmas and Happy New Year.  
Arlene Peck



## SATELLITE GALLERIES CORNER

Welcome all new members! Let me tell you about the 4 Satellite Galleries you can hang in, just by being a BAA member!

We have approximately 50 pieces at Beaufort OB/GYN waiting room in the building next to the Beaufort Hospital, 100-150 at Low Country Medical, and around 50 on each floor of the Beaufort County Administration Building. For the grand amount of \$10 for one, and \$5 for each additional piece, you can hang for six months in any of these locations. The percentage if sold is only 10% to BAA. This is a great opportunity for those who have always wanted to hang in a gallery, but weren't quite ready or, you do not have the artwork for a changeover every six weeks. The Satellite Galleries allow you to hang in one, or all of them. Registration is online and easy!! The next two hangings will be: "2012 "

March 16- Beaufort OB/GYN

April 14- Low Country Medical

Any questions??? Call Lynne Morgan 843-525-6229

## EDUCATING OURSELVES



Gay Torrey and Pat Kelly holding the collage they created in the style of Picasso at the last meeting of Educating Ourselves. The painting was raffled with the tickets costing one dollar. Dorothy Fetters won the painting, and \$17 was deposited in the BAA donation jar.

The next meeting of Educating Ourselves will take place on Tuesday January 3 from 12:00 to 1:00 (please note the new time) in the gallery. Tommy Toner will be talking about her work and showing examples and techniques.

## Third Wednesday Programs (public invited!)

Held at the Charles Lind Brown Center Studio from 2:30 to 4:00 pm , These programs cover the arts in a variety of forms and spotlight BAA and other local artists.. They are free and open to all who are interested in the visual arts.

January 18th

BAA artist Sandra Bagette will demonstrate how to put the finishing touches on an oil painting, which is what she calls "the fun part of oil painting". Last January, we watched her begin a beautiful floral demonstrating the basics of laying shapes. Now we will see shapes become her final design. What fun! Come and bring a friend!

February 15 –a panel of our photographers.

Submitted by Betty Betz

# GALLERY HAPPENINGS

## 2012 BAA Gallery Changeover & Reception Dates

Sunday setup & take down		Friday Reception
Jan. 8 – Feb. 18	“Lowcountry Textures” (all gallery artists)	Jan. 13
Feb. 19 – Mar. 31	Nancy Kates & Susan Palmer	Feb. 24
Apr. 1 – May 12	Tricia Gardner	Apr. 6
May 14* – Jun. 23	Mary Jane Martin	May 18
<b>*Monday changeover due to Mothers Day Sunday</b>		
Jun. 24 – Aug. 4	Cathy Keup	Jun. 29
Aug. 5 – Sep. 15	Carol Newsome	Aug 10
Sep. 16 – Oct. 27	Ellen Long	Sep. 21
Oct. 28 – Dec. 8	Pat Kelly & Gay Torrey	Nov. 2
<b>*Dec. 9 – Jan. 5</b>	<b>(Holiday Show/4 weeks)*</b>	<b>Dec. 14</b>

## PEARLS OF WISDOM FOR THE JOURNEY

### SHOWING UP

As I sit down to write this, I am in the middle of the week before Christmas. Today I have mailed out our Christmas letter, wrapped gifts to mail, attended our book club’s Christmas luncheon, gone to shop in Bluffton, delivered paintings to frame, and picked up scans of new paintings. I look through my open door to my studio (my sacred space), and I see an almost clean studio calling me to return. However, it is not yet time. I enjoy the time out to be with friends and family, to entertain and listen to holiday music. I have learned to give myself a break from painting and deal with the relational part of my life during November and December.

As you read this newsletter, it is now time to return to our creative work. “True art is in the doing”, said Jean Renoir. I have many ideas. I am inspired. I am eager to start, but I vacillate between questions. “Which medium should I use” or “What person should I paint”? I think about the multiple failures I have had this past fall (I only did two paintings I felt were successful). Sometimes I think maybe I am losing my competence. That thought comes when I have thought up something much too complicated.

But, no! God has given us the gift of a **creative spirit** and a passion or desire to work in our medium-writing, sculpture, painting, photography. That divine spirit is calling us to express something beautiful and we must do it. It takes courage to get past the “weeds” of negativity or discouragement or busyness.

I am convinced that “doing art” is not a matter of talent. It takes hard work and **years of practice**. It means we show up. We don’t just think about it or talk about it. And we don’t always succeed. We cannot ignore what is calling us from our deep inner self. And so we show up and begin.

I have a little corner in my studio where I go at the beginning of each day. I quiet myself down. I read a small devotional or maybe a page from a favorite inspirational book, not a “how to” book. I put on some quiet music. **I start small and do warm up exercises**. For example, I get used to the water, the colors, and the wetness of the paper if I plan to work in watercolors.

It is not unlike playing the piano. There is no way I can sit down after weeks of no piano practice and expect to play a difficult piece. It is much better to warm up with exercises or easy pieces to get my mind and hands coordinated and familiar with the keys.

So, show up. Begin with something simple. Let the creative spirit flow. You may find some new expression or a surprise. The joy of discovery cannot happen if we don’t show up.

Linda Sheppard

# Of Member Interest

The group of 12 abstract artists, *Art Beyond Tradition*, will be exhibiting their 2012 show at the Center of the Arts Lobby space of the University of South Carolina at 801 Carteret Street. The show, "New Vibrations", will be on view from January 15 and close on April 30. The opening reception will be on February 3, 2012 from 5:30 to 7:30.

Exhibiting Artists include: Deanna Bowdish, Cindy Chiappetta, Marilyn Dizikes, Jo Dye, Vickie Jourdan, Sharon Collings Licata, Mary Jane Martin (BAA Member), Mary Sullivan, Joan Templer (BAA Member), Arla Wible, Carol Williams, Irene Williamson

The public is most cordially invited!

## LINDA SHEPPARD'S WINTER ART CLASS SCHEDULE

### DRAWING FOR THE ABSOLUTE

**BEGINNER-JAN. 9 & 10, Mon, Tues 9:00-12:00 \$85** Limit 10 Location: Coastal Art Supply

### STILL LIFE- JAN. 24, 25,26

**Tues.Wed.Thurs. 9:00-4:00. Pastel, oil, or acrylic \$200** Required: one previous class in the medium you are going to use. Limit 10 Location: Coastal Art Supply, 812 Port Republic Street, Beaufort (across from Beaufort Inn)

### Drawing Children and Family

**Members Feb. 7, 8, & 9, Tues.,Wed.,Thurs. 9-4:00. \$225, includes special supplies.** Students will work in black and white charcoal, pencil, wash pencil and pen.



Watch for an email blast in January listing BAA Studio classes for early 2012.

Call Ellen Long for special requests: (843) 838-3205.



**Eve Miller** received an honorable mention award at the Arkansas National Juried Pastel Show in October 2011 and another honorable mention in November at the Degas Pastel Society Juried Exhibition in New Orleans.

**Mary Jane Martin's** painting titled "Bird on A Wire" was given the Marion C. Williams Memorial Award in the Annual SC Watermedia Show. The art was juried in by the City Gallery in Charleston, SC. Mary Alice Braukman juried the awards. The show will be in the City Gallery from November 5, 2011 until December 31, 2011. "Bird on A Wire" was also selected to be in the traveling show. The SC Watermedia Traveling Show is run through the SC State Museum's Traveling Exhibits Program and will



## BAA SPONSORED WORKSHOPS

The Lesley Rich ([Lesley@lesleyrich.com](mailto:Lesley@lesleyrich.com)) workshop will be held from February 20-24, 2012. The title of this workshop is 'Figures in the Landscape.' Demos will be in oil, but participants may work in the medium of their choice. This class is open to all skill levels. The objective of this workshop is to go beyond the familiar and be inventive and imaginative, all within the framework of a good abstract design. You will be studying how to paint figures and incorporate them into the landscape. You don't need a lot of detail and don't even need a high skill level to accomplish this. It is more a matter of concentrating on the design, the values and the chroma. In this class we will alternately use live models and photographs for the subject material. The workshop is open to 20 participants. All levels are accepted. Cost for the 5-day workshop is \$450 for non-members and \$410 for BAA members. Reservation deadline is January 1, 2012. For more **information or to sign up, please contact Arlene Peck at 843-838-1357.**

***The BAA encourages, supports and provides opportunities for the growth of all members and contributes to the community with aesthetic and educational experiences in the visual arts.***

**2010-2011 Officers**

President	Jacqueline Jones	838-2227
PresidentElect	Robert Ryzner	705-9245
President Emeritus	Tom Van Steenberg	725-5528
VP Spring Exhibit	Mary Lee Grove	521-0691
VP Membership	Barbara Hunt	521-0097
VP Gallery	Audrey Montgomery	522-3151
VP Satellite Galleries	Lynne Morgan	525-6229
Recording Sec.	Ethie Morrison	838-2136
Corresponding Sec.	Cynthia Zeiss	521-1058
Treasurer	Larry Kay	522-9207

**Beaufort Art Association**

P. O. Box 625  
Beaufort, SC 29901  
Email: [baa@islc.net](mailto:baa@islc.net)  
[www.beaufortartassociation.com](http://www.beaufortartassociation.com)

**BAA Gallery and Office**

913 Bay Street  
Beaufort, SC 29902  
Email: [baa@islc.net](mailto:baa@islc.net)  
Phone: 843-521-4444

**Beaufort Art Association is a nonprofit organization.**

BAA is funded in part by County tax revenue and private donations.

**BAA Board Meetings**

are held the third Wednesday of each month at 12:30 p.m.

**artistic endeavors** is the newsletter of the Beaufort Art Association.

Information submitted is published on a space available basis and may be edited at the discretion of the Editor.

Non-Profit Org.

U.S. Postage

PAID

**P.O. Box 625**

**Beaufort, SC 29901**

***\*\*\*NOTE: If you know someone who cannot receive the BAA Newsletter via email, please send address to [lbricker@embarqmail.com](mailto:lbricker@embarqmail.com)***